



“WHEN A WORK LIFTS
YOUR SPIRITS AND
INSPIRES YOU, DO NOT
LOOK FOR ANY OTHER
STANDARD TO JUDGE BY:
THE WORK IS GOOD,
THE PRODUCT OF
A MASTER”

JEAN DE LA BRUYERE (1696)

*Percival
Memorials*

A memorial is a lasting symbol of remembrance

This brochure is designed to help you choose from the almost limitless designs, materials and carvings that are available.

The designs shown in this brochure are representative of the most popular ones, it is worth remembering that any shape can generally be produced in any material.

If you have seen a memorial that you particularly like and have a photographic reference, or even a sketch, let us see it. We can often work from such a reference to produce the memorial that is tailored to your taste.





Protecting precious space and the environment


All cemeteries and churchyards have regulations concerning the size, design and materials that can be used for memorials. In many cases these regulations are intended to protect precious space and an environment that can be many hundreds of years old. With our local specialist knowledge we have put the memorials into these categories; Cemeteries Collection, Churchyard Collection and Cremation Collection.

We advise that at least 6 months should elapse between an interment and the erection of a memorial to allow the ground to settle.



CEMETERIES

Collection



Here are some examples of memorials that are permitted in most of the local cemeteries. Always remember that any of the granite types and shapes can be transferred from one to another.

Percival Memorials

Always remember that any of the granite types and shapes can be transferred from one to another.



Castleton

Blue pearl granite with ogee shaped top



Hartington

Karin light grey granite with ogee shaped top



Litton

Bahama blue granite with ogee shaped top and shaded moulded edge



Milford

Indian black granite with ogee shaped top

Percival Memorials

Always remember that any of the granite types and shapes can be transferred from one to another.



Stanton

South African dark grey granite with ogee shaped top



Swanick

Indian black granite with ogee shaped top and moulded edges



Elton

Kerala green granite with coleby shaped top and gold pin line

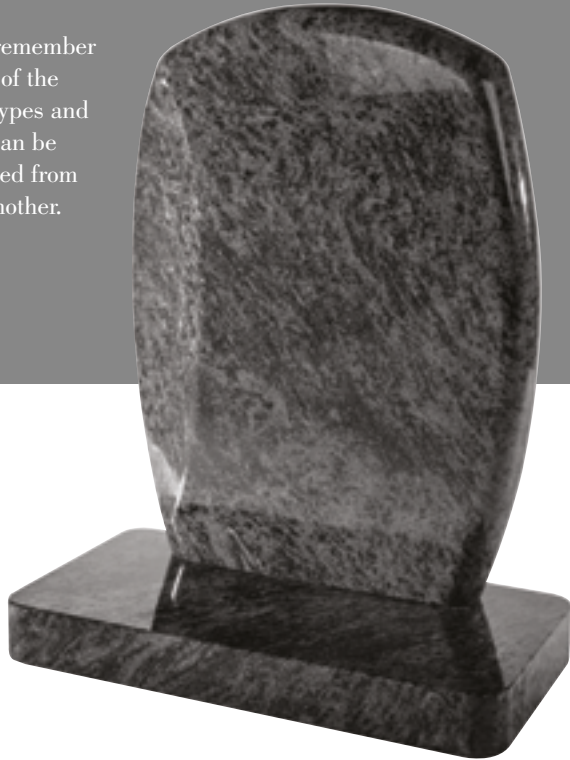


Hilton

Indian light grey granite with curved shaped top, pitched edges and splayed base

Percival Memorials

Always remember that any of the granite types and shapes can be transferred from one to another.



Parwich

Bahama blue granite, pebble shaped with design area on left hand side



Shardlow

Indian black granite with coleby shaped top



Twyford

Bahama blue granite with coleby shaped top

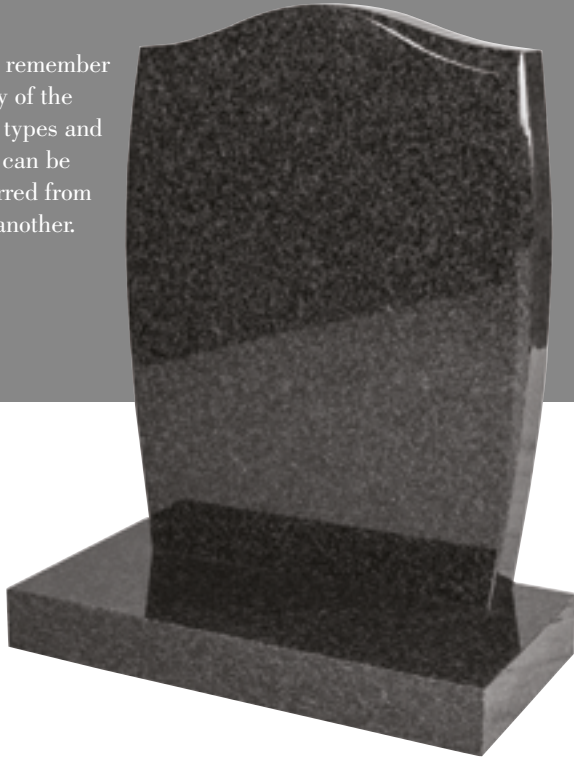


Middleton

South African dark grey granite with curved shaped top and rustic pitched edges

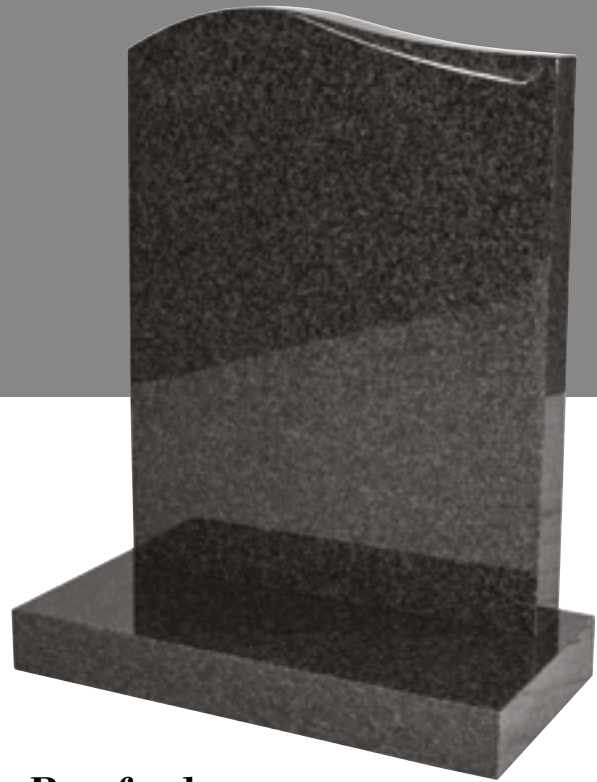
Percival Memorials

Always remember that any of the granite types and shapes can be transferred from one to another.



Carsington

South African dark grey granite with ogee anton shaped top and curved sides



Bamford

South African dark grey granite with half ogee tapered chamfer shaped top




Clifton

South African dark grey granite with ogee shaped top and moulded edges



CHURCHYARD

Collection



The Church of England Churchyards have to abide by the Diocese General Regulations

These regulations state that gold, silver and lead letters are not permitted.

Here are some examples of Memorials that are permitted.

From the Cemeteries Collection the following memorials are permitted with a matt finish; Hartington, Stanton, Hilton, Middleton, Carsington, Bamford and Clifton.

Percival Memorials



Ashford

Yorkstone with ogee top



Mapperley

South African dark grey granite with
ogee shaped top

Percival Memorials



Baslow

South African dark grey granite with curved shaped top and Celtic cross design



Bradwell

White limestone with ogee shaped top



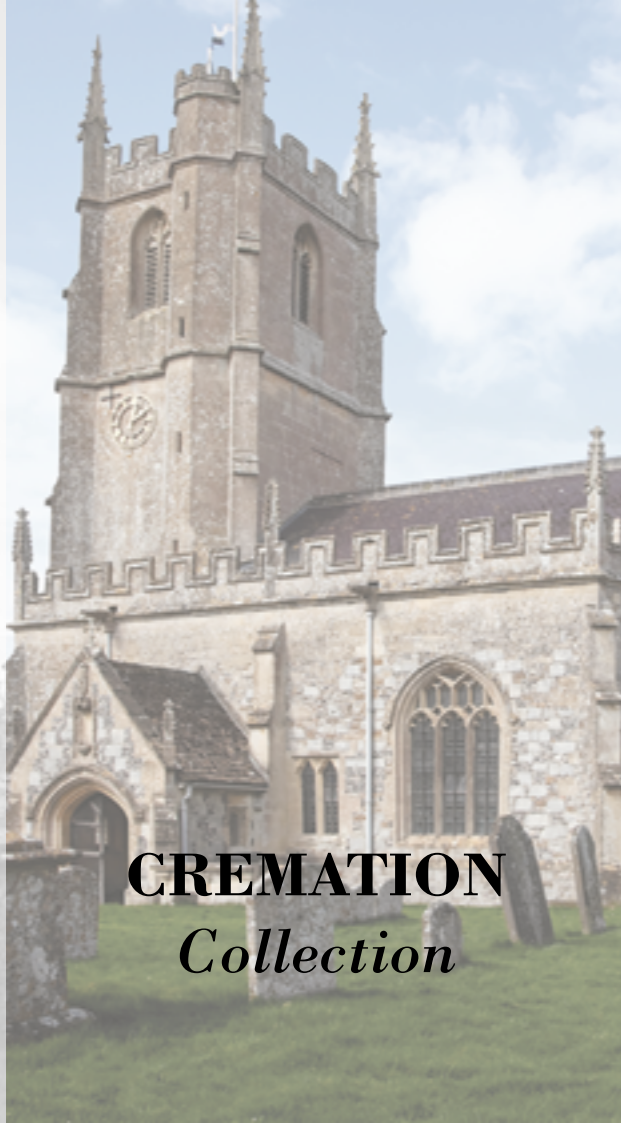
Alport

White limestone with rounded profiling and moulded edge



Denby

Derbyshire fossil limestone with ogee shaped top



CREMATION

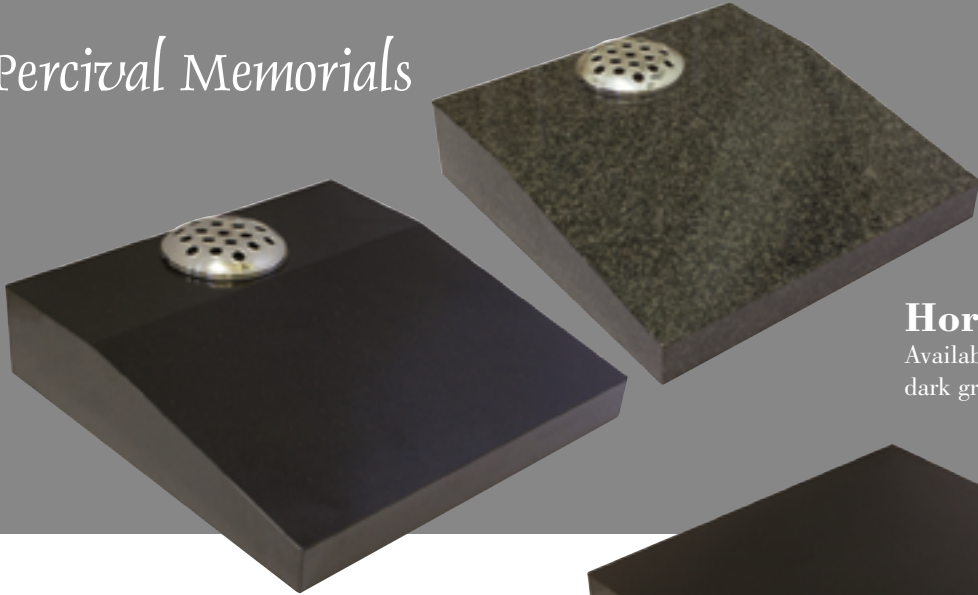
Collection

Each churchyard and local cemetery has different specifications for cremated remains memorials. There are too many to show in this brochure, however, when we know the churchyard or cemetery concerned, we can show you some examples.

Here are a few examples, all these memorials are permitted in the Derbyshire Dales cemeteries.

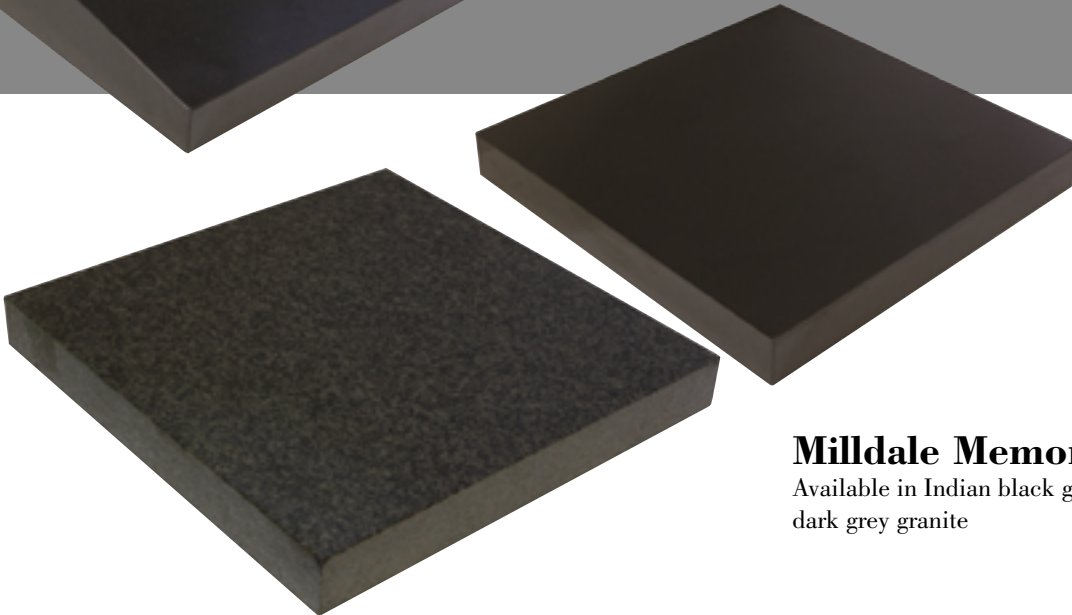
These memorials can be ordered in any colour granite, however, they may take longer to produce.

Percival Memorials



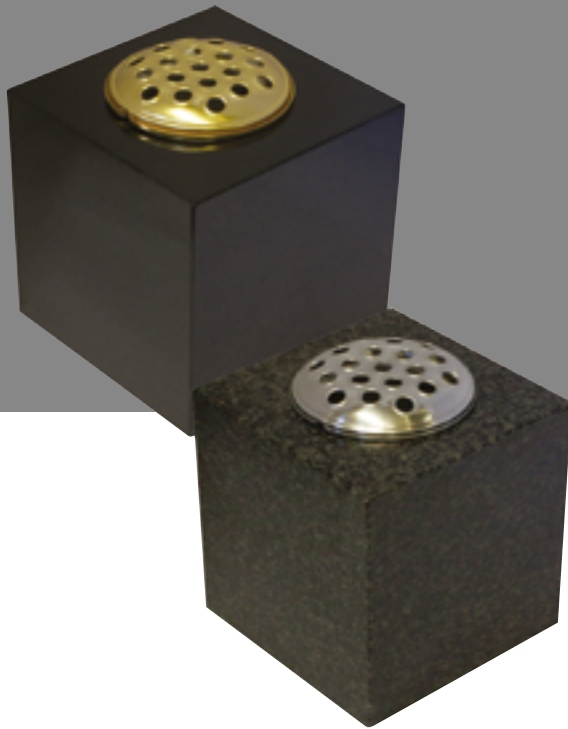
Horsley Desktops

Available in Indian black granite and South African dark grey granite



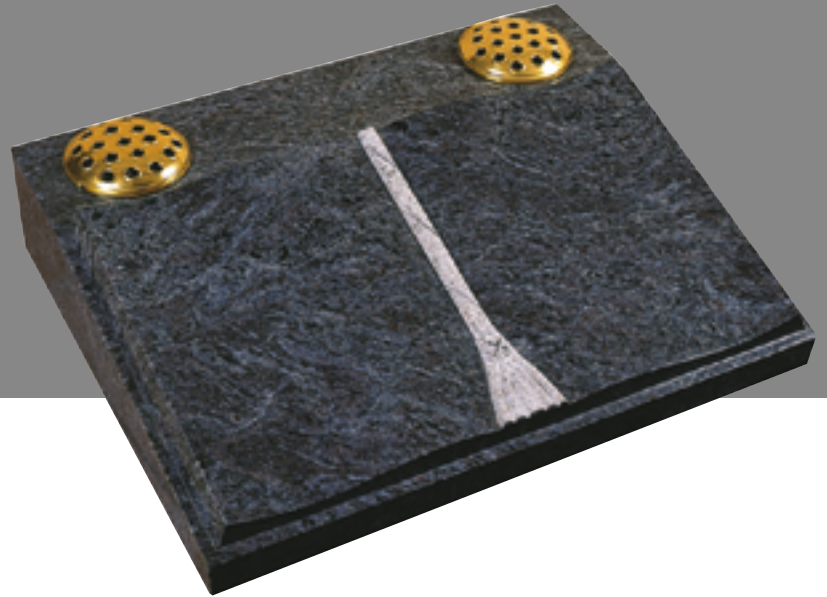
Milldale Memorial Tablets

Available in Indian black granite and South African dark grey granite



Wetton Floral Vases

Available in black Indian granite or South African grey granite with a choice of gold or silver flower holder.



Winster

Bahama blue granite with raised book and shaded tassel with a choice of gold or silver flower holders.

Choice of Font

The choice of typeface is almost as important as the epitaph itself.

It depicts a style, whether it is classic, traditional, old-style or contemporary.

We can offer the choice of fonts shown opposite.

Most of our lettering is sandblasted and is available in various colours:

- **Gold**
- **Silver**
- **Grey**
- **White**
- **Black**
- **Natural** (*the stone itself*)

We can, however, offer hand cut and lead lettering. Please ask for details.

Block

Clearface Roman

Flareserif

New Century Schoolbook Roman

Palatino

Times New Roman

Amazone

Cataneo Bold

Canterbury

Dauphin

Friz Quadrata

Zapf Chancery

Inscriptions and verses

It is sometimes difficult to think of the everlasting words for the memorial.

Here are a few suggestions for direct use or simply to inspire.

In loving memory of

Treasured memories of

In ever loving memory of

Forever in our thoughts

Rest in peace

Peace perfect peace

Sadly missed yet not forgotten

Loves last gift, remembrance

At rest

Always in our thoughts

Forever in our hearts

Cherished memories

Percival Memorials

9A Heath Street, Buxton, SK17 6LT

Tel: 01298 762991 Email: enquiries@percivalmemorials.co.uk

Percival Memorials is a trading division of Daynes Monumental Ltd